

**DUPOTOP**  
Films

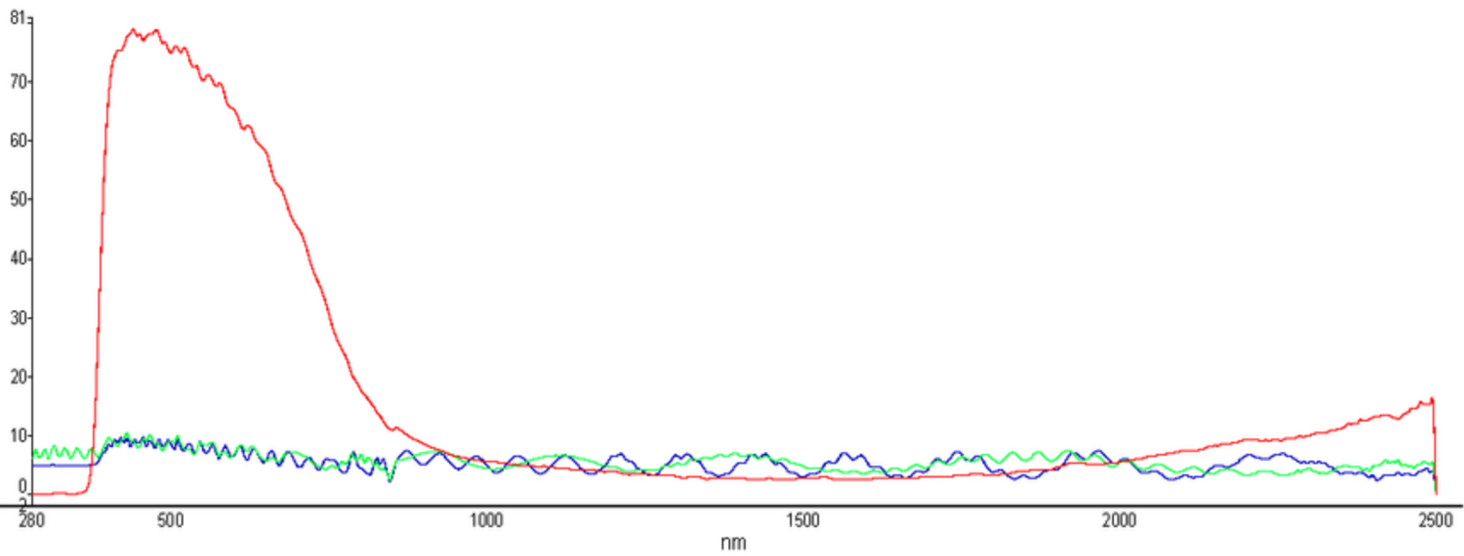
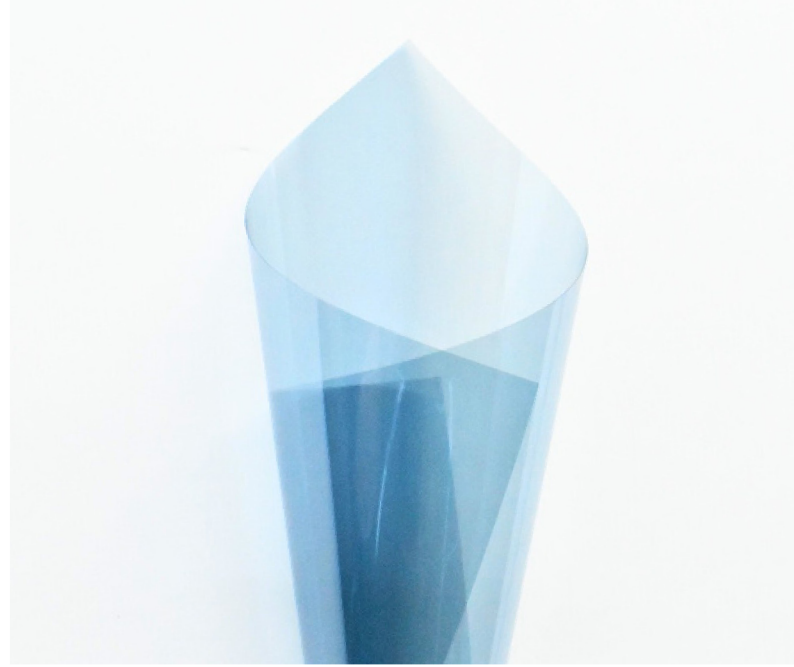
*Flagship Window Film  
Series*

**NANO  
CERAMIC  
IR95**



CATALOG

# NANO CERMIC IR95 DNC-7595



— IR7595-PSA Sample  
— IR7595-SR Sample  
— IR7595-T Sample

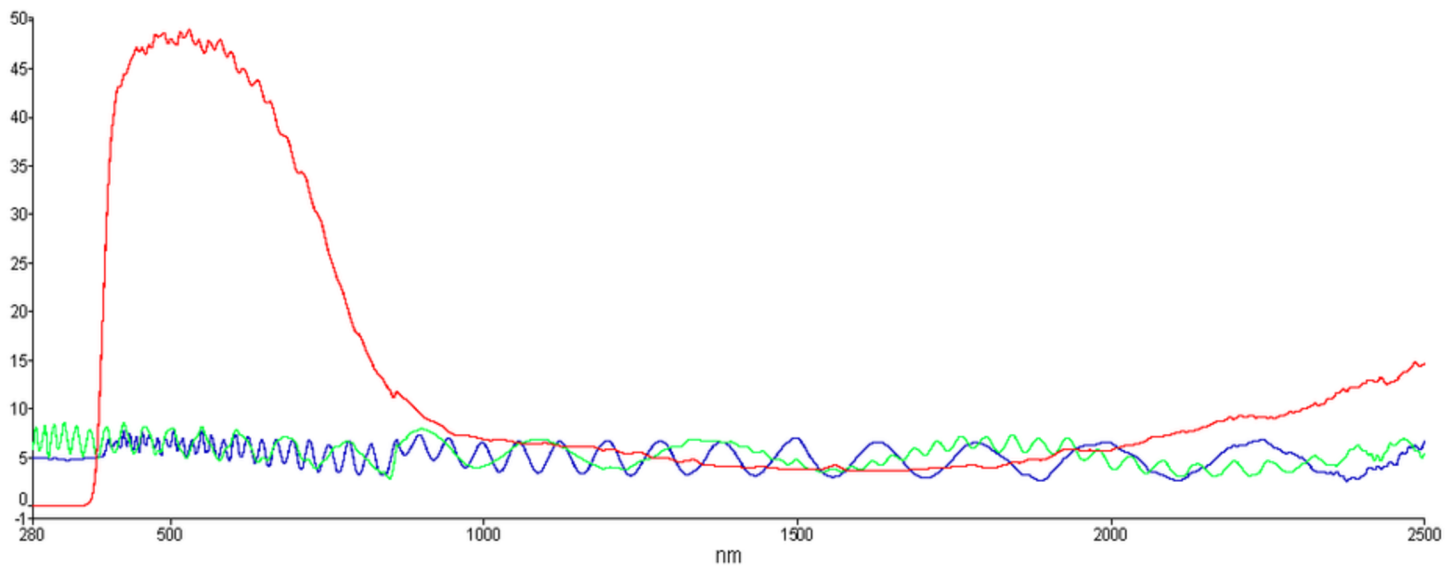
S  
P  
E  
C  
I  
F  
I  
C  
A  
T  
I  
O  
N  
S

Infrared Rejection (950nm)	95%	Ultraviolet Rejection	99%	Visible Light Transmission	72%
Infrared Rejection (1400nm)	99%	Thickness	52±2 μm	Total Solar Energy Rejection (TSER)	51.1%
PSA Visible Light Reflectance	7.9%	Shading Coefficient	0.55%	Total Solar Transmittance	34.5%
SR Visible Light Reflectance	8.1%	Haze	<1%	Total Solar Reflectance	5.8%

[dupotopfilms.com](http://dupotopfilms.com)

**DUPOTOP**  
Films

# NANO CERMIC IR95 DNC-4595



— IR5095-PSA Sample  
— IR5095-SR Sample  
— IR5095-T Sample

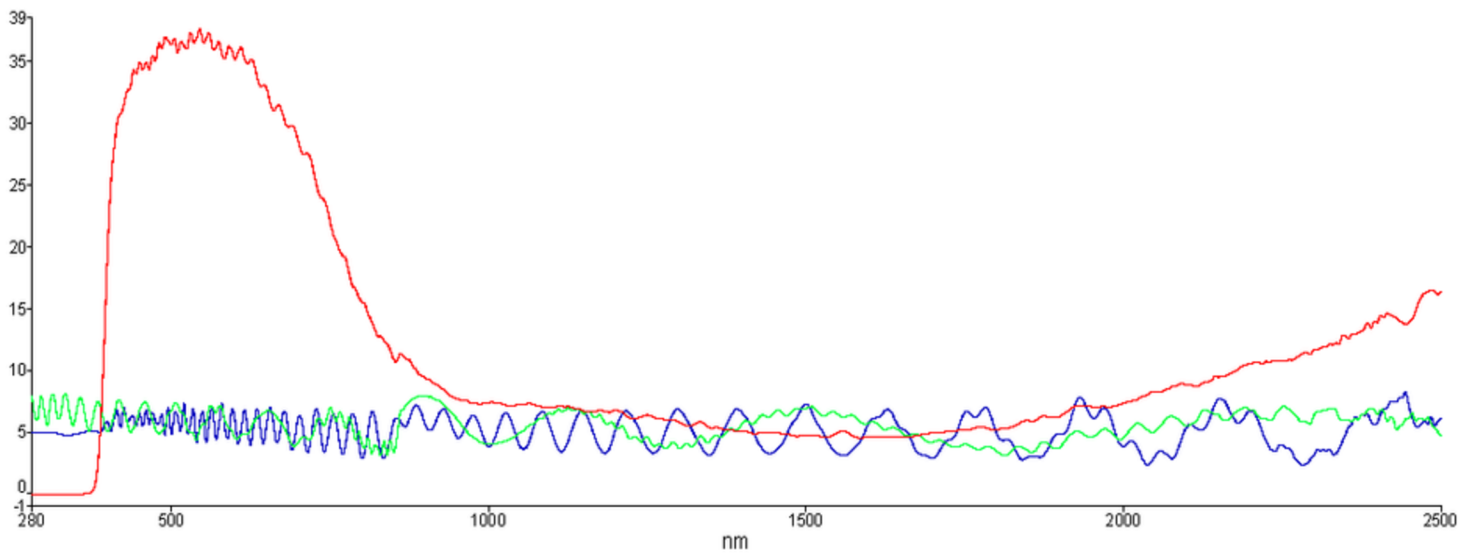
S  
P  
E  
C  
I  
F  
I  
C  
A  
T  
I  
O  
N  
S

Infrared Rejection (950nm)	95%	Ultraviolet Rejection	99%	Visible Light Transmission	45%
Infrared Rejection (1400nm)	99%	Thickness	52±2 μm	Total Solar Energy Rejection (TSER)	58.8%
PSA Visible Light Reflectance	6.4%	Shading Coefficient	0.46%	Total Solar Transmittance	24.3%
SR Visible Light Reflectance	6.7%	Haze	<1%	Total Solar Reflectance	5.5%

[dupotopfilms.com](http://dupotopfilms.com)

**DUPOTOP**  
Films

# NANO CERMIC IR95 DNC-3595



— IR3595-P.SA.Sam ple  
— IR3595-SR.Sam ple  
— IR3595-T.Sam ple

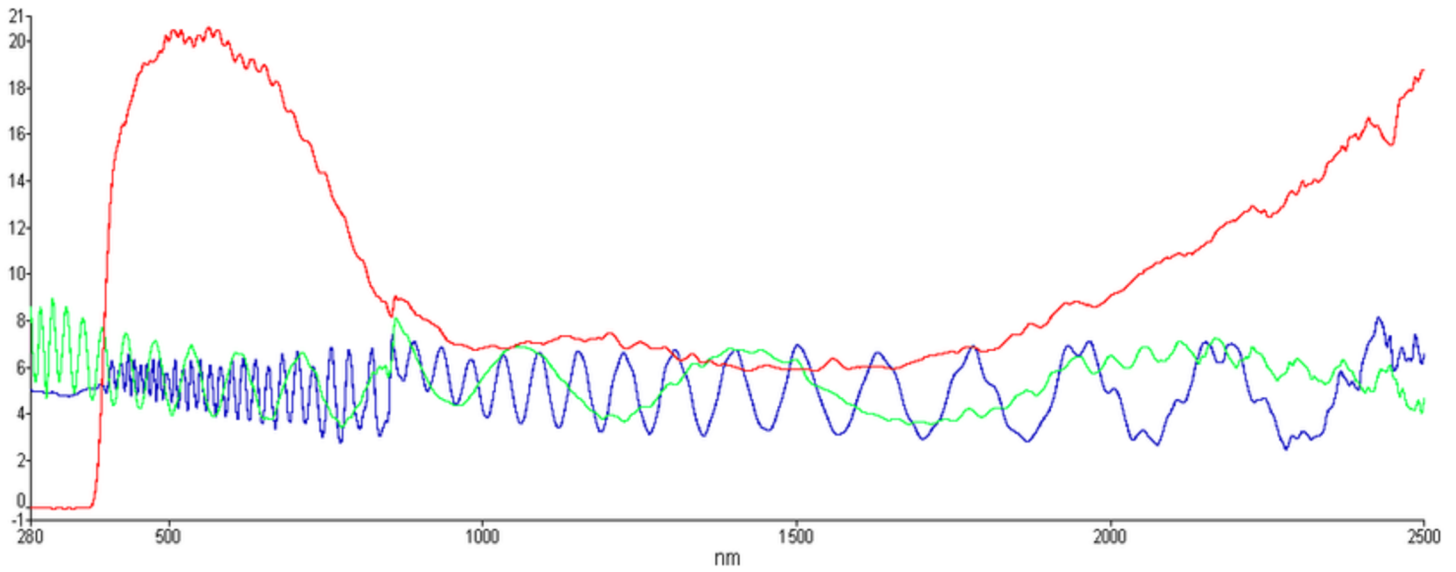
S  
P  
E  
C  
I  
F  
I  
C  
A  
T  
I  
O  
N  
S

Infrared Rejection (950nm)	95%	Ultraviolet Rejection	99%	Visible Light Transmission	36%
Infrared Rejection (1400nm)	99%	Thickness	52±2 μm	Total Solar Energy Rejection (TSER)	62.5%
PSA Visible Light Reflectance	5.9%	Shading Coefficient	0.42%	Total Solar Transmittance	19.3%
SR Visible Light Reflectance	6.0%	Haze	<1%	Total Solar Reflectance	5.3%

[dupotopfilms.com](http://dupotopfilms.com)

**DUPOTOP**  
Films

# NANO CERMIC IR95 DNC-1595



IR1595-PSA.Sample  
IR1595-SR.Sample  
IR1595-T.Sample

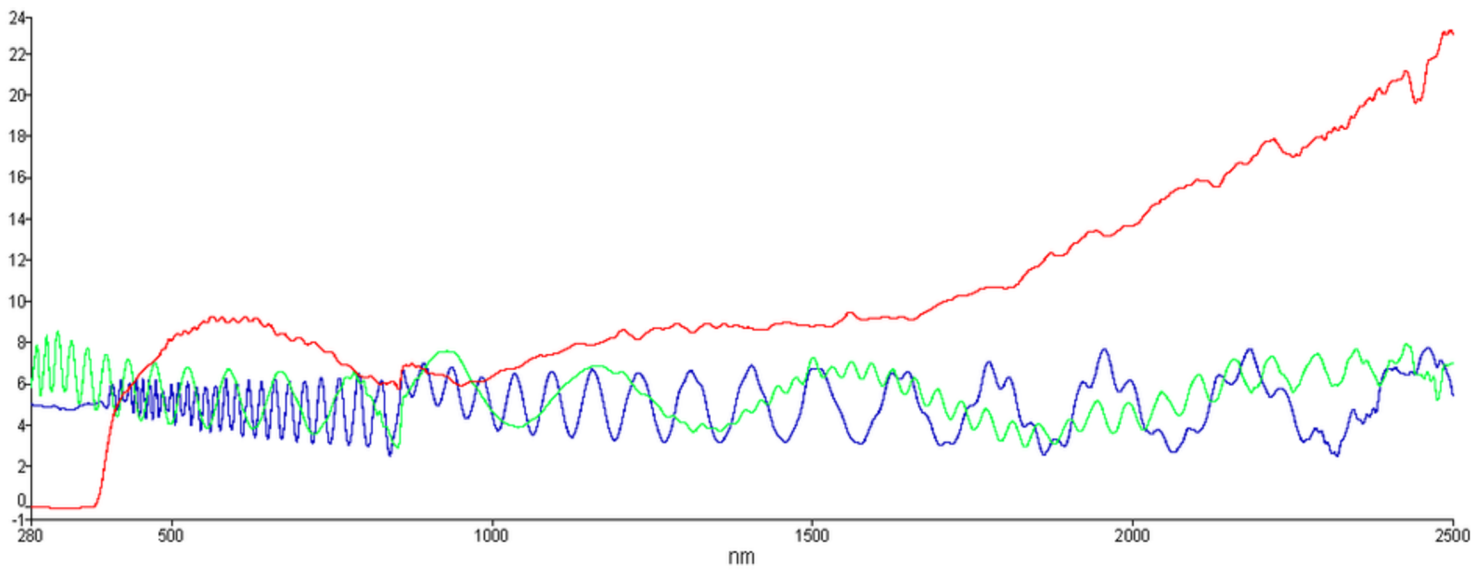
S  
P  
E  
C  
I  
F  
I  
C  
A  
T  
I  
O  
N  
S

Infrared Rejection (950nm)	95%	Ultraviolet Rejection	99%	Visible Light Transmission	16%
Infrared Rejection (1400nm)	99%	Thickness	52±2 μm	Total Solar Energy Rejection (TSER)	68%
PSA Visible Light Reflectance	5.3%	Shading Coefficient	0.36%	Total Solar Transmittance	12.1%
SR Visible Light Reflectance	5.6%	Haze	<1%	Total Solar Reflectance	5.4%

[dupotopfilms.com](http://dupotopfilms.com)

**DUPOTOP**  
Films

# NANO CERMIC IR95 DNC-0595



— IR0595-P SA Sample  
— IR0595-SR Sample  
— IR0595-T Sample

S  
P  
E  
C  
I  
F  
I  
C  
A  
T  
I  
O  
N  
S

Infrared Rejection (950nm)	95%	Ultraviolet Rejection	99%	Visible Light Transmission	6%
Infrared Rejection (1400nm)	98%	Thickness	52±2 μm	Total Solar Energy Rejection (TSER)	71.8%
PSA Visible Light Reflectance	5.1%	Shading Coefficient	0.32%	Total Solar Transmittance	7%
SR Visible Light Reflectance	5.5%	Haze	<1%	Total Solar Reflectance	5.4%

[dupotopfilms.com](http://dupotopfilms.com)

**DUPOTOP**  
Films

**DUPOTOP**  
Films

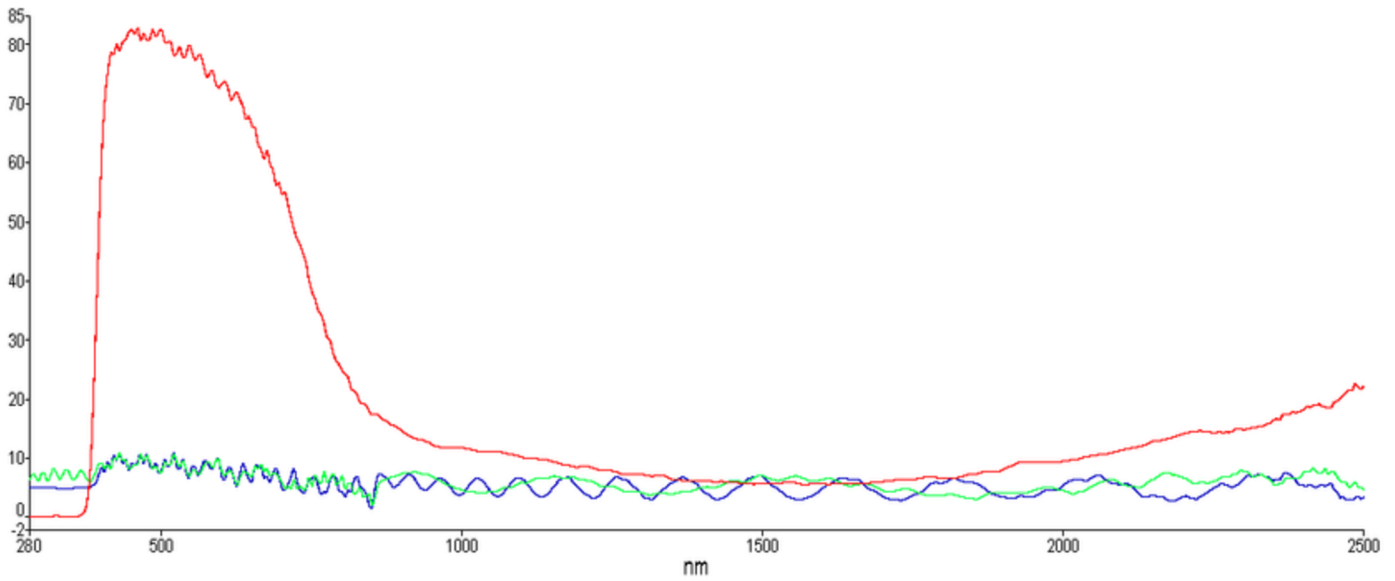
*Flagship Window Film  
Series*

**NANO  
CERAMIC  
IR90**



CATALOG

# NANO CERMIC IR90 DIR-7590



— IR7590 MARK-PSA Sample  
— IR7590 MARK-SR Sample  
— IR7590 MARK-T Sample

S  
P  
E  
C  
I  
F  
I  
C  
A  
T  
I  
O  
N  
S

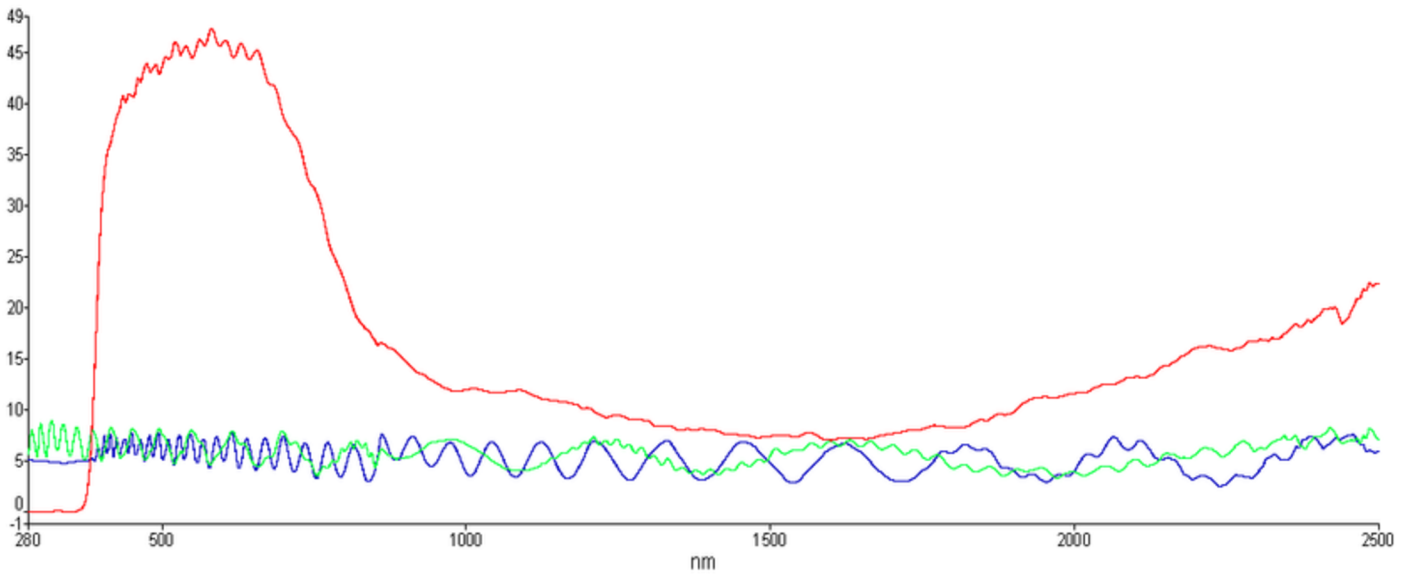
Infrared Rejection (950nm)	91%	Ultraviolet Rejection	99%	Visible Light Transmission	76%
Infrared Rejection (1400nm)	98%	Thickness	52±2 μm	Total Solar Energy Rejection (TSER)	47.3%
PSA Visible Light Reflectance	8.8%	Shading Coefficient	0.59%	Total Solar Transmittance	39.7%
SR Visible Light Reflectance	8.7%	Haze	<1%	Total Solar Reflectance	6.5%

[dupotopfilms.com](http://dupotopfilms.com)

**DUPOTOP**  
Films

# NANO CERMIC IR90

# DIR-4590

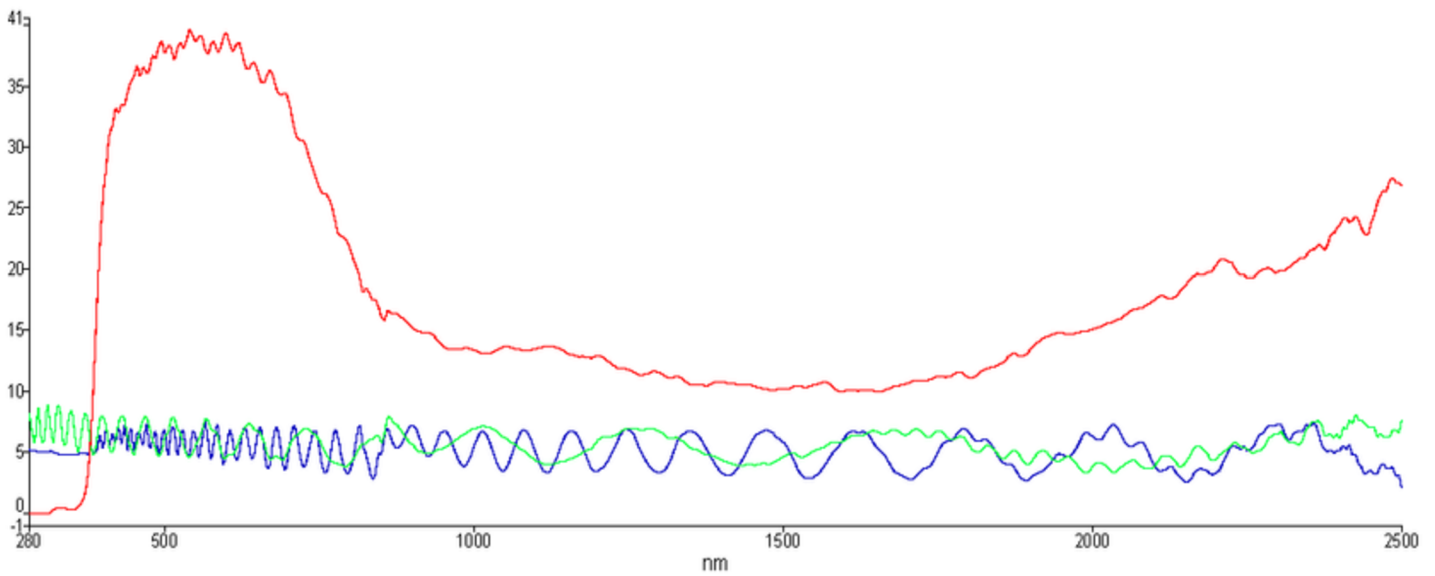


— IR4590HD-PSA Sample  
— IR4590HD-SR Sample  
— IR4590HD-T Sample

S  
P  
E  
C  
I  
F  
I  
C  
A  
T  
I  
O  
N  
S

Infrared Rejection (1400nm)	98%	Ultraviolet Rejection	99%	Visible Light Transmission	45.8%
Infrared Rejection (950nm)	91%	Thickness	52±2 μm	Total Solar Energy Rejection (TSER)	57.6%
PSA Visible Light Reflectance	6.4%	Shading Coefficient	0.48%	Total Solar Transmittance	25.8%
SR Visible Light Reflectance	6.6%	Haze	<1%	Total Solar Reflectance	5.4%

# NANO CERMIC IR90 DIR-3590



— IR3590HD-PSA Sample  
— IR3590HD-SR Sample  
— IR3590HD-T Sample

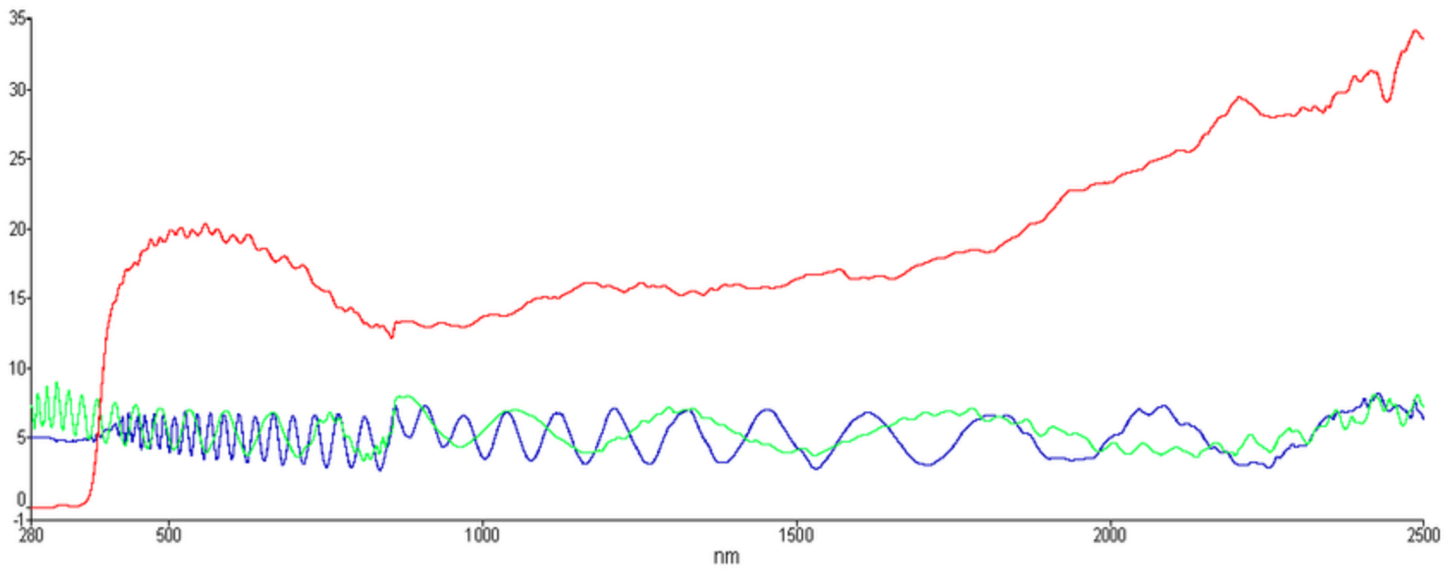
S  
P  
E  
C  
I  
F  
I  
C  
A  
T  
I  
O  
N  
S

Infrared Rejection (950nm)	90%	Ultraviolet Rejection	99%	Visible Light Transmission	34%
Infrared Rejection (1400nm)	97%	Thickness	52±2 μm	Total Solar Energy Rejection (TSER)	59.5%
PSA Visible Light Reflectance	6.0%	Shading Coefficient	0.46%	Total Solar Transmittance	23.4%
SR Visible Light Reflectance	6.3%	Haze	<1%	Total Solar Reflectance	5.4%

[dupotopfilms.com](http://dupotopfilms.com)

**DUPOTOP**  
Films

# NANO CERMIC IR90 DIR-1590

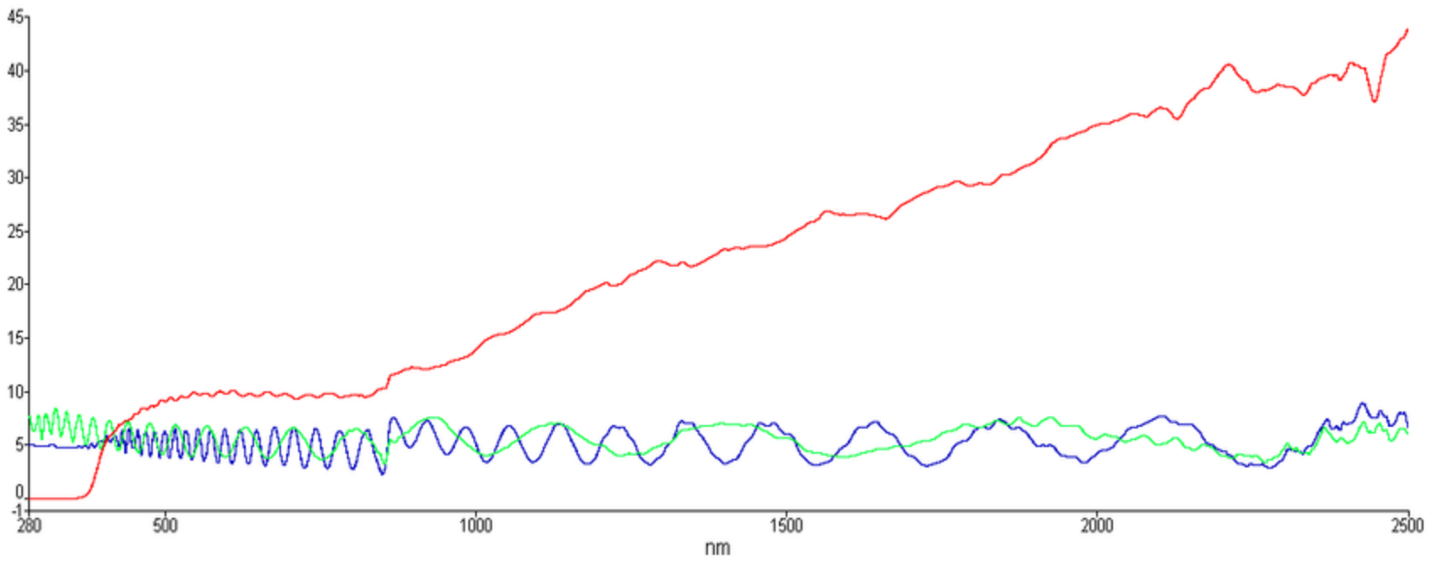


— IR1590HD-PSA Sample  
— IR1590HD-SR Sample  
— IR1590HD-T Sample

SPECIFICATIONS

Infrared Rejection (950nm)	90%	Ultraviolet Rejection	99%	Visible Light Transmission	16%
Infrared Rejection (1400nm)	94%	Thickness	52±2 μm	Total Solar Energy Rejection (TSER)	65.6%
PSA Visible Light Reflectance	5.4%	Shading Coefficient	0.39%	Total Solar Transmittance	15.2%
SR Visible Light Reflectance	5.7%	Haze	<1%	Total Solar Reflectance	5.2%

# NANO CERMIC IR90 DIR-0590



— IR0590HD-PSA Sample  
— IR0590HD-SR Sample  
— IR0590HD-T Sample

S  
P  
E  
C  
I  
F  
I  
C  
A  
T  
I  
O  
N  
S

Infrared Rejection (950nm)	90%	Ultraviolet Rejection	99%	Visible Light Transmission	6%
Infrared Rejection (1400nm)	89%	Thickness	52±2 μm	Total Solar Energy Rejection (TSER)	68.1%
PSA Visible Light Reflectance	5.2%	Shading Coefficient	0.36%	Total Solar Transmittance	11.8%
SR Visible Light Reflectance	5.6%	Haze	<1%	Total Solar Reflectance	4.7%

[dupotopfilms.com](http://dupotopfilms.com)

**DUPOTOP**  
Films